

# The ACC National Cardiovascular Data Registry(NCDR)

Quality Management  
Opportunities within the  
Cardiac Cath Lab



# Brenda Springer, RN BSN Database Specialist

- Parkview Health Systems
- Sixteen plus years of Cath Lab Experience
- Four years Critical Care Experience
- Managing the Cath/PCI Database since its inception, 2002



# The ACC National Cardiovascular Data Registry(NCDR)

I have nothing to disclose



# Goals for today

- Raise awareness of the what the Cath/PCI Registry can do for cardiologist practicing in the cath lab
- Promote communications between data abstractors and cardiologist

# History of the ACC NCDR Cath/PCI Registry

- Oldest of the six ACC NCDR registries--launched 1997
- Voluntary
- Comprehensive measurement system of data elements and standardized definitions
- Focus on quality in the Cath Lab
- Over 1046 sites enrolled. With 856 sites submitting data
- Over Two million Cath/PCI records
- Multi-phased audit program
- PCI Mortality is Risk Adjusted
- 192 Data Fields for PCI Registry version three
- Version four will have 254 beginning July 1,2009
- Parkview has 13,876 patient records and growing everyday

# NCDR Registries

- Care Registry (Carotid Artery Revascularization and Endarterectomy Registry)
- ICD Registry
- ACTION Registry—GWTG
- IC3 (Improving Continuous Cardiac Care)
- IMPACT Registry (Improving Pediatric and Adult Congenital Treatment)

# How data is collected and distributed at Parkview

- Interface from HIS to Cath Lab Hemo System to Cath/PCI software
- Chart Audits
- All demographics are interfaced
- Five fields for patient history are interfaced
- Small amount of “Intra” Cath Lab data is also interfaced

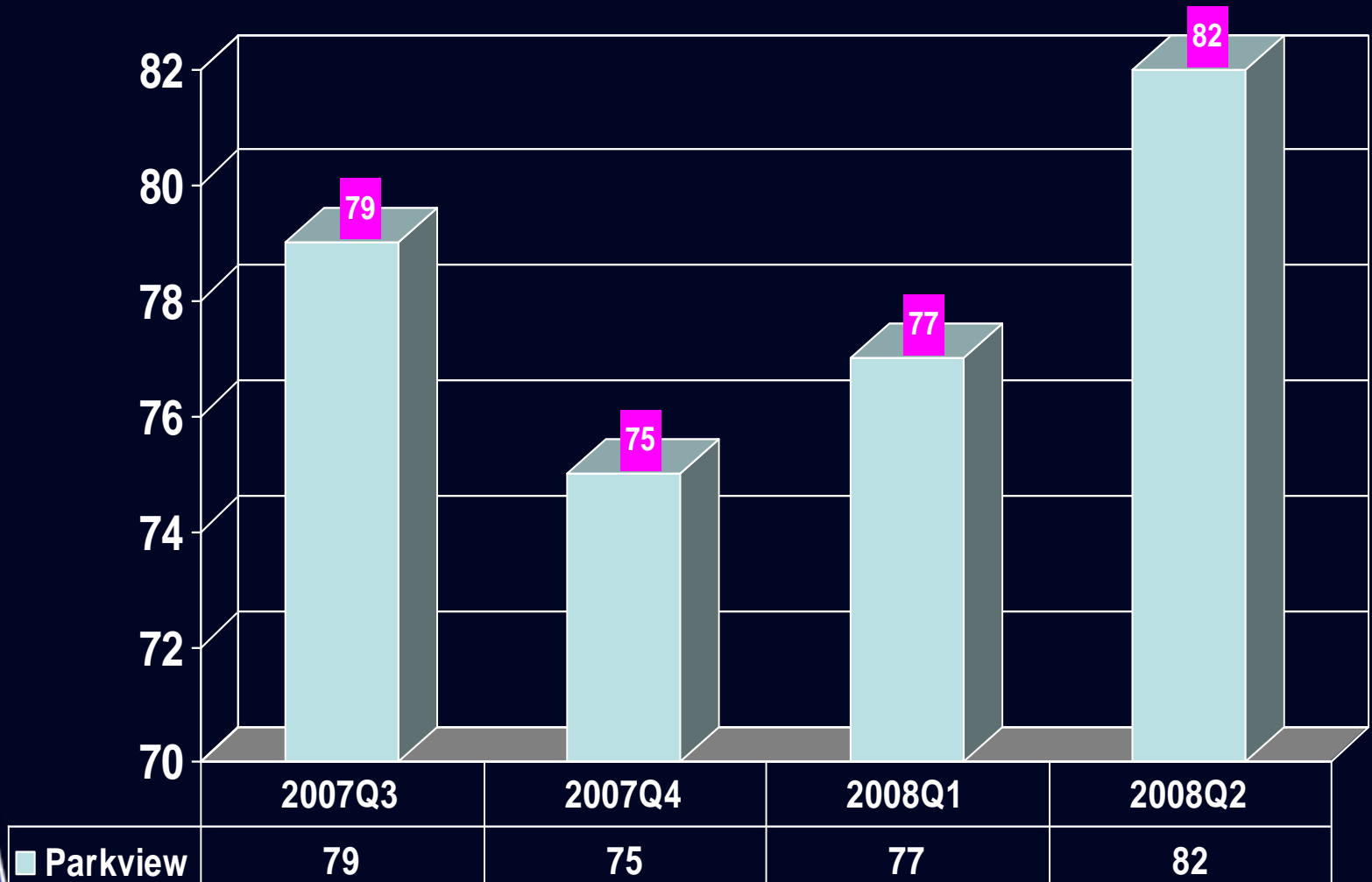
# What can be obtained from this database?

- Physician Specific Reports
- Hospital Specific Reports
- Door to Balloon Times
- Data Cleansing

# Cath/PCI Information Output

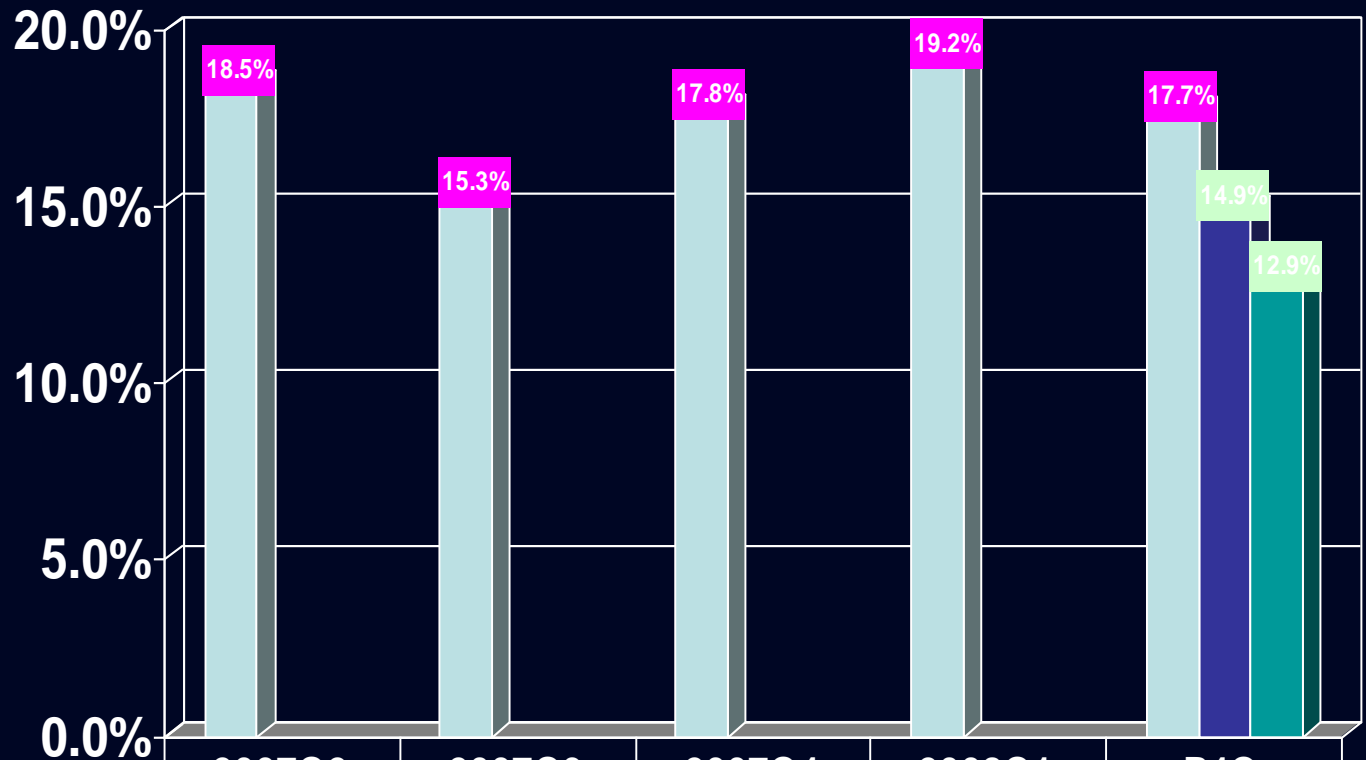
- Sample of reports created exclusively through the Cath/PCI software
- Sample of reports created using the quarterly ACC NCDR reports

# ST Elevated MI(STEMI) *Non-Transfers* Arrival to Parkview Randallia Reported in minutes



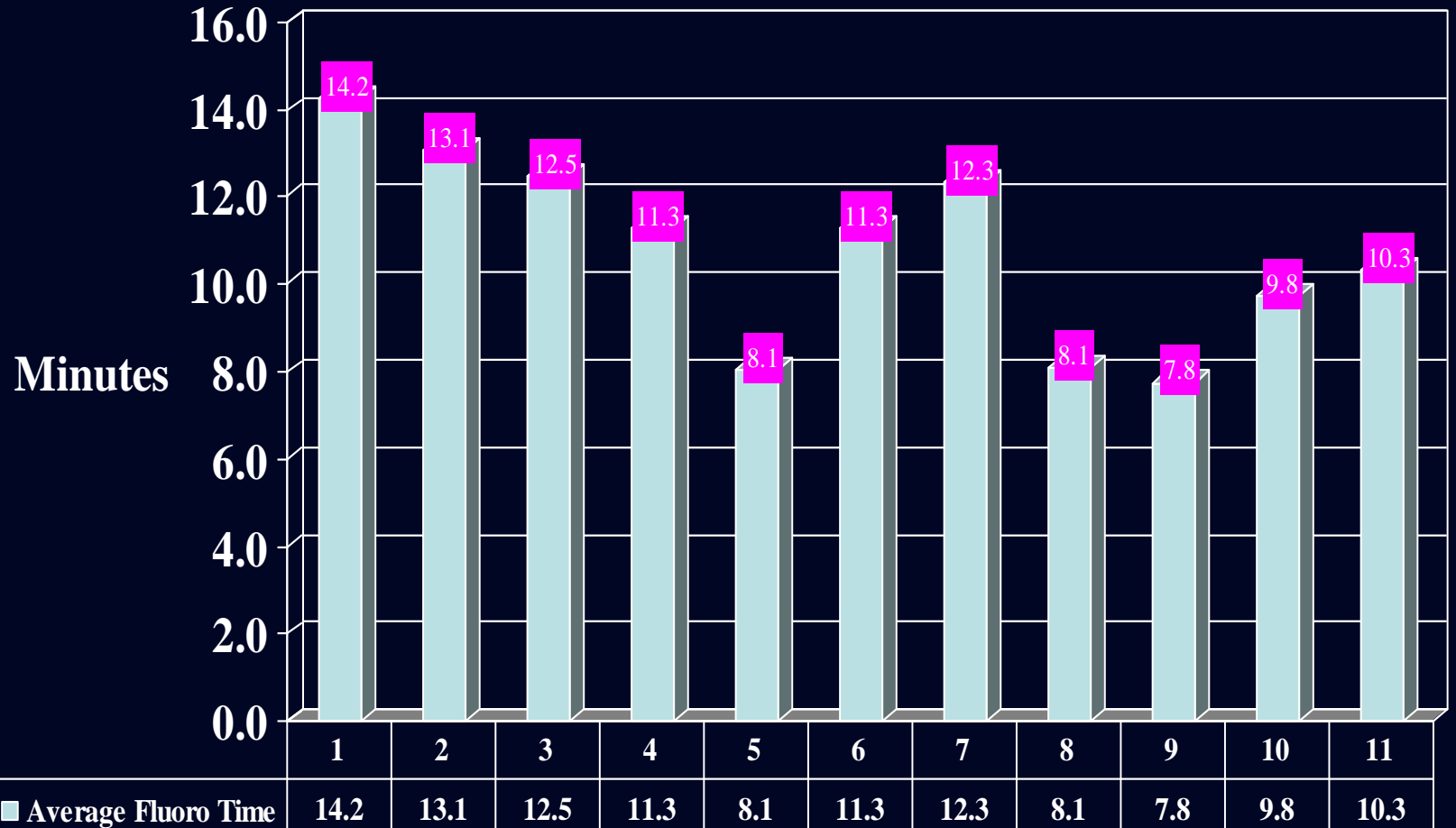
## Primary PCI for STEMI

Indicate whether the PCI procedure is being performed for purposes of reperfusion in the presence of an acute MI documented in the medical record.  
Percentage of total PCI Patients

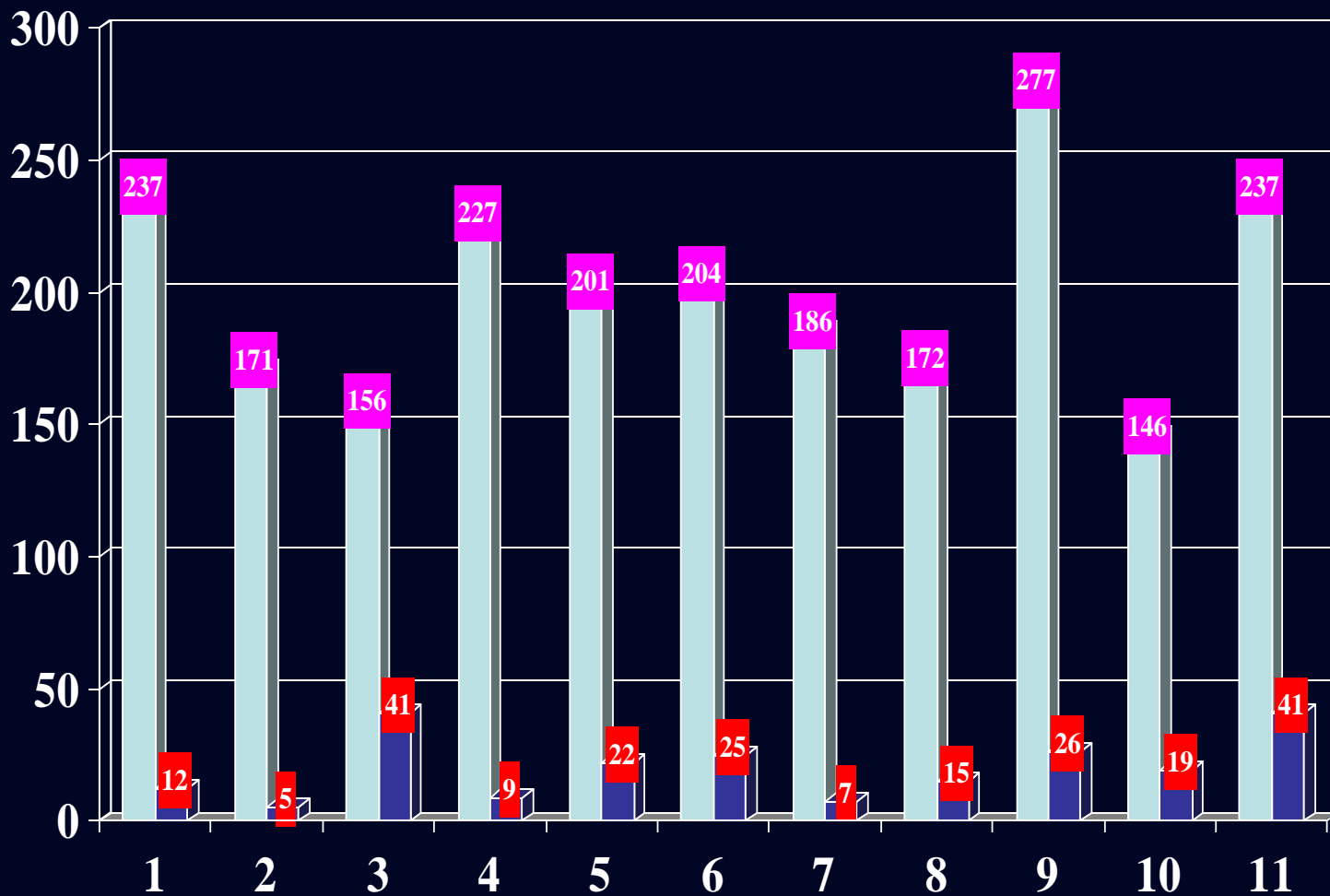


■ Parkview	18.5%	15.3%	17.8%	19.2%	17.7%
■ Like Hospitals					14.9%
■ All Hospitals					12.9%

# Average Fluoro Exposure per Interventional MD PCI Procedures Quarter Two 2008

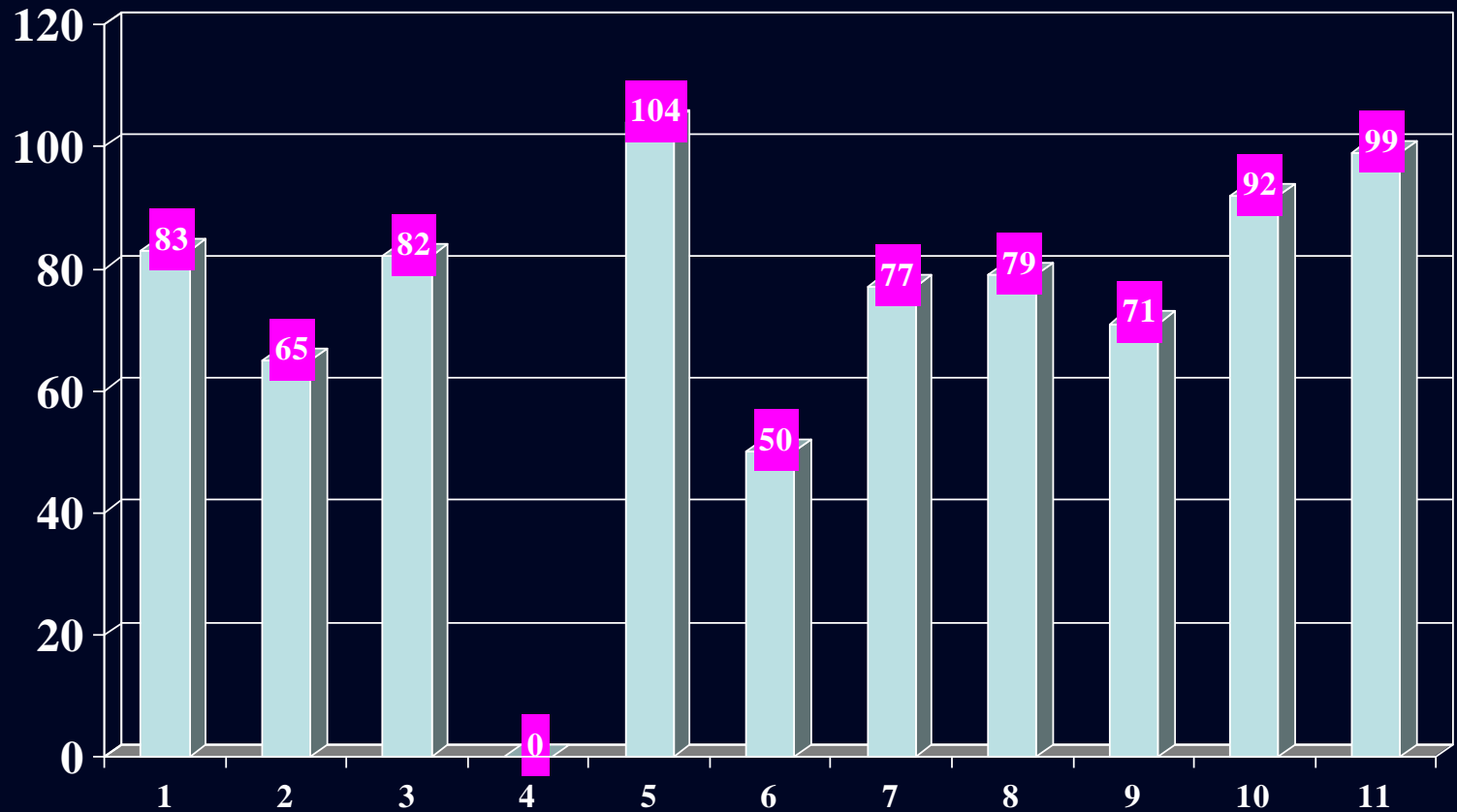


# Average Contrast Use per Interventionalist 2008 Quarter Two



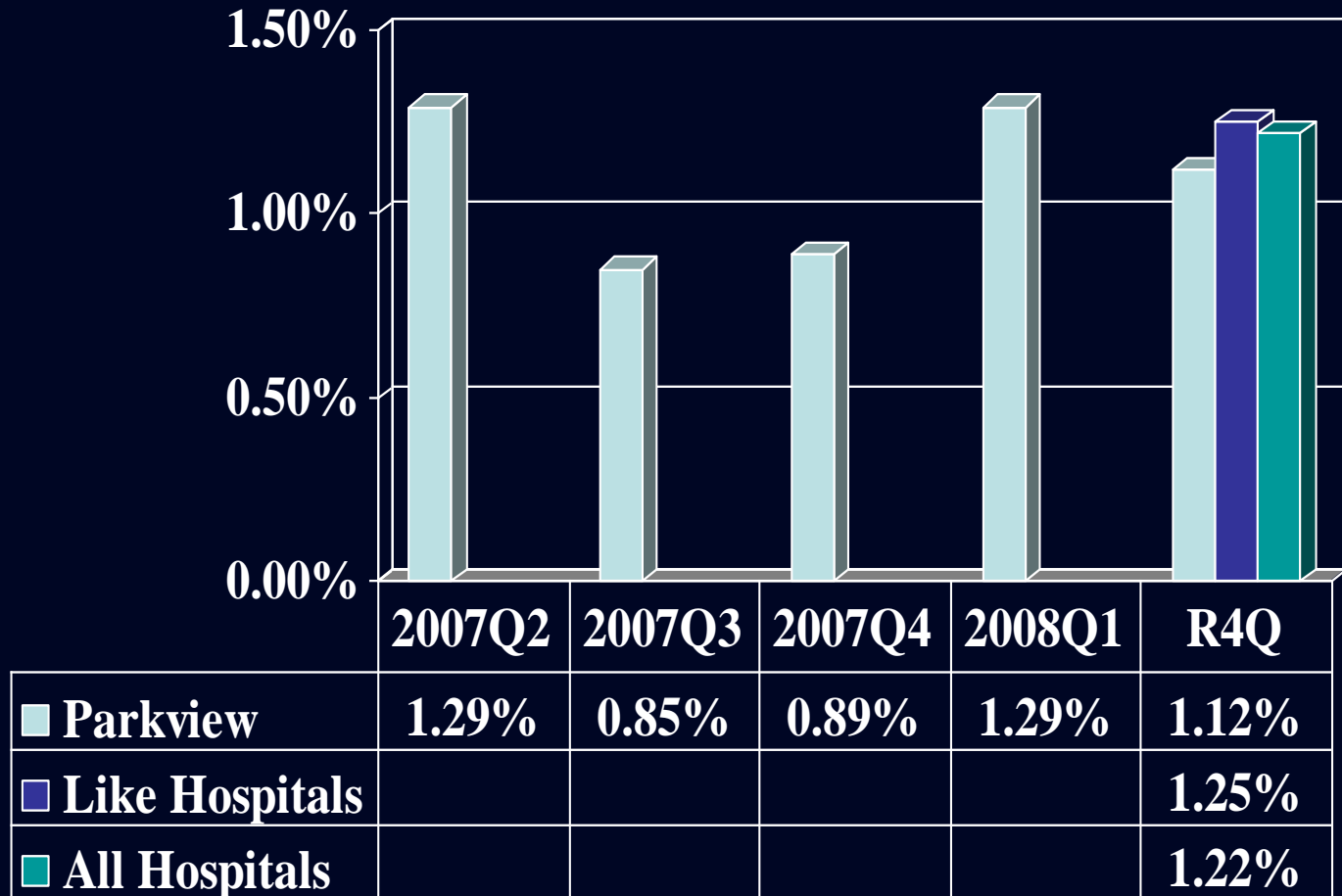
Pink denotes average contrast use  
Orange denotes number of PCI procedures

# Average Door to Balloon Time per Interventionalist 2008 Quarter Two (Reflected in Minutes)

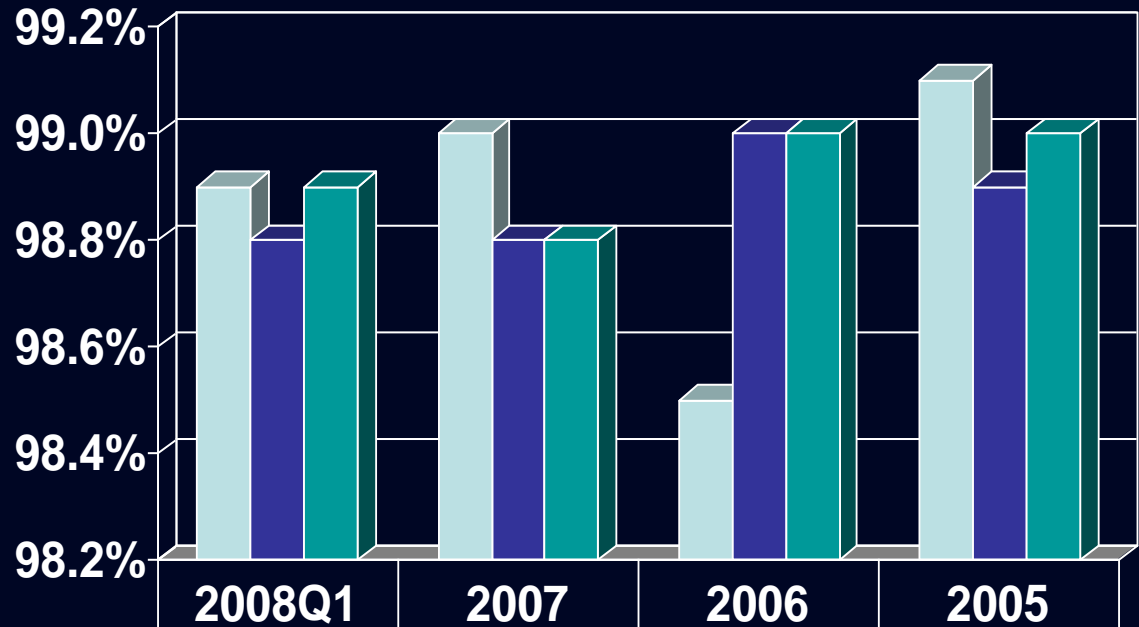


“0” refers to NO STEMI cases performed in this quarter.

## Risk Adjusted Mortality Rate All PCI Patients (line 1736)

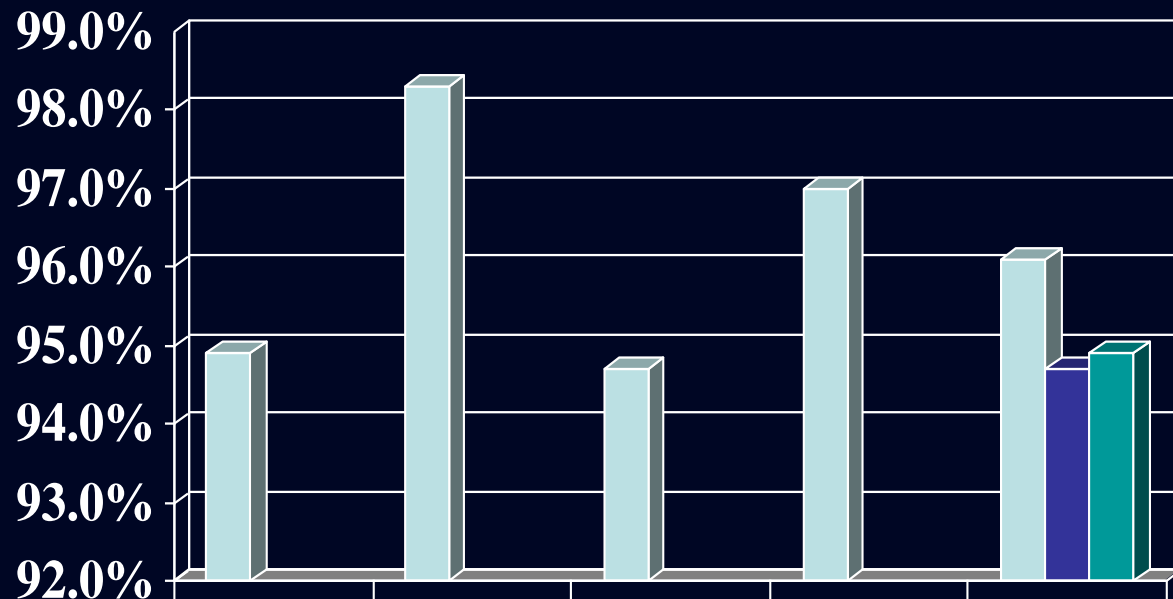


# American College of Cardiology(ACC) National Cardiovascular Data Registry(NCDR) Cath/PCI Data Base Survival Rates



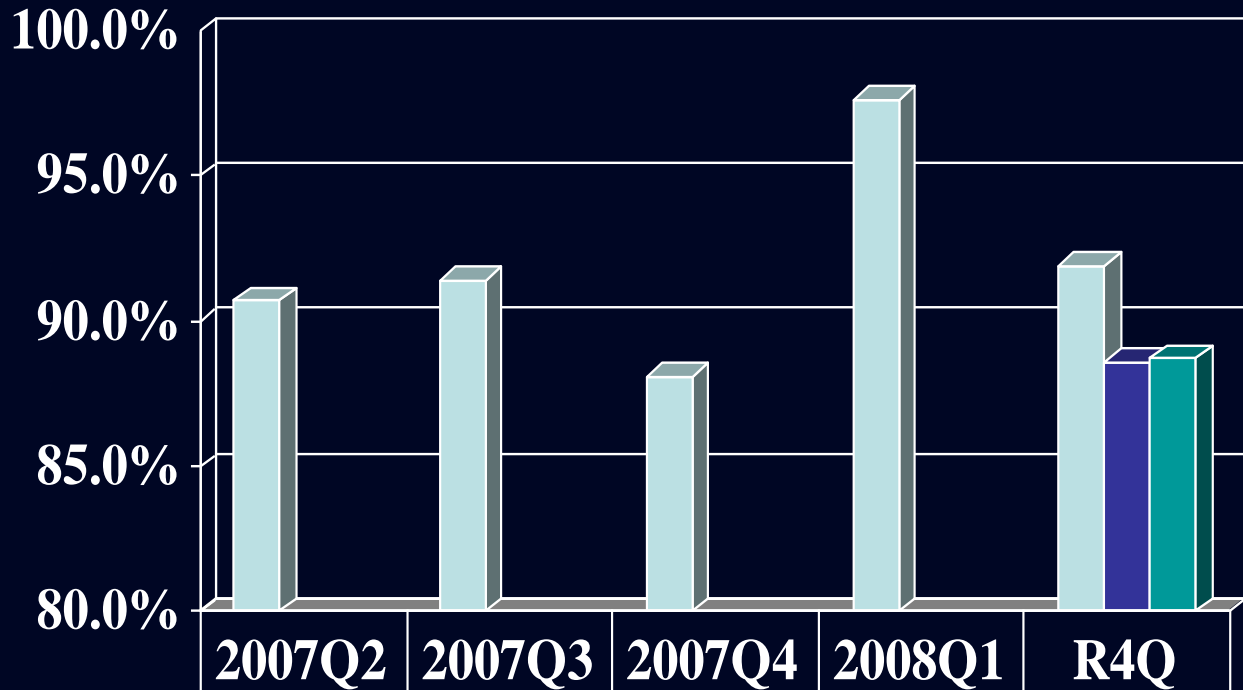
■ Parkview Hospitals	98.9%	99.0%	98.5%	99.1%
■ Like Hospitals	98.8%	98.8%	99.0%	98.9%
■ All Hospitals	98.9%	98.8%	99.0%	99.0%

**Angiographic Success for Acute PCI (STEMI only)  
(Calculated per Lesion Success)  
(line 1870)**



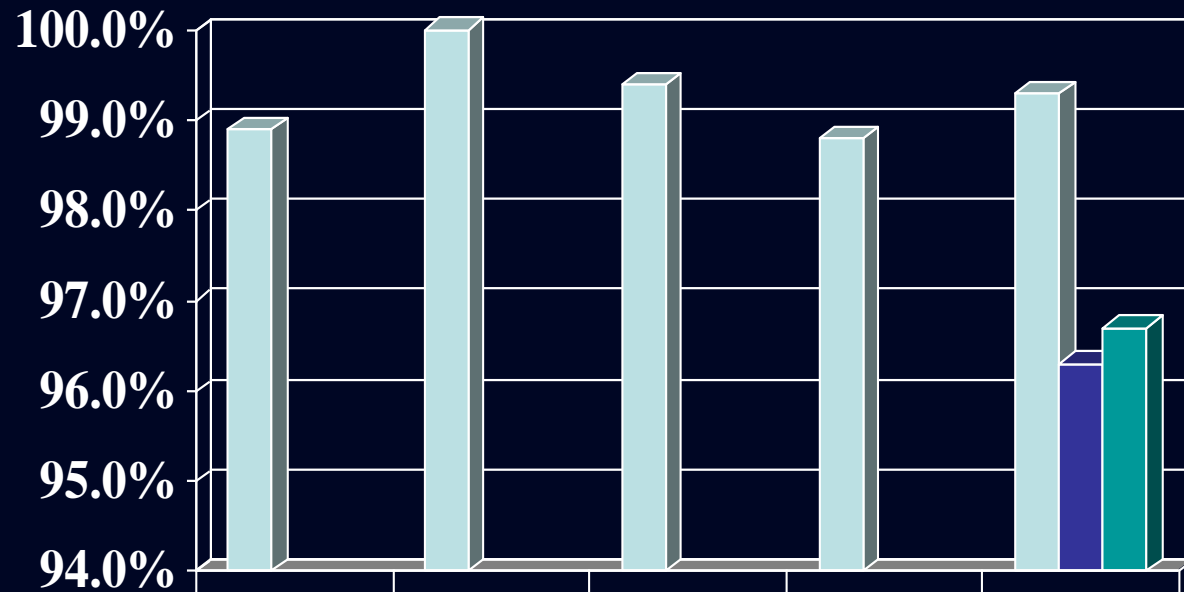
	2007Q2	2007Q3	2007Q4	2008Q1	R4Q
■ Parkview	94.9%	98.3%	94.7%	97.0%	96.1%
■ Like Hospitals					94.7%
■ All Hospitals					94.9%

## PCI Procedures with Primary PCI Successful Primary PCI Rate (line 1886)



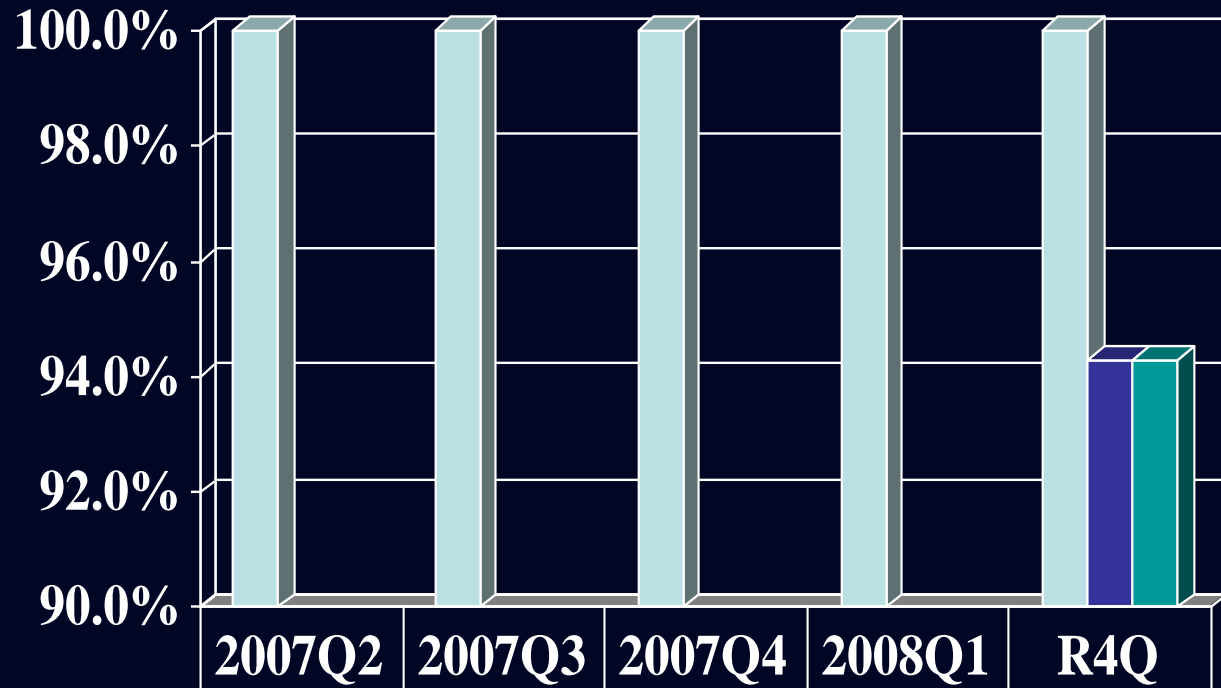
	2007Q2	2007Q3	2007Q4	2008Q1	R4Q
■ Parkview	90.7%	91.4%	88.1%	97.6%	91.9%
■ Like Hospitals					88.6%
■ All Hospitals					88.7%

**Aspirin on discharge  
All PCI Patients with ACS  
(line 1581)**



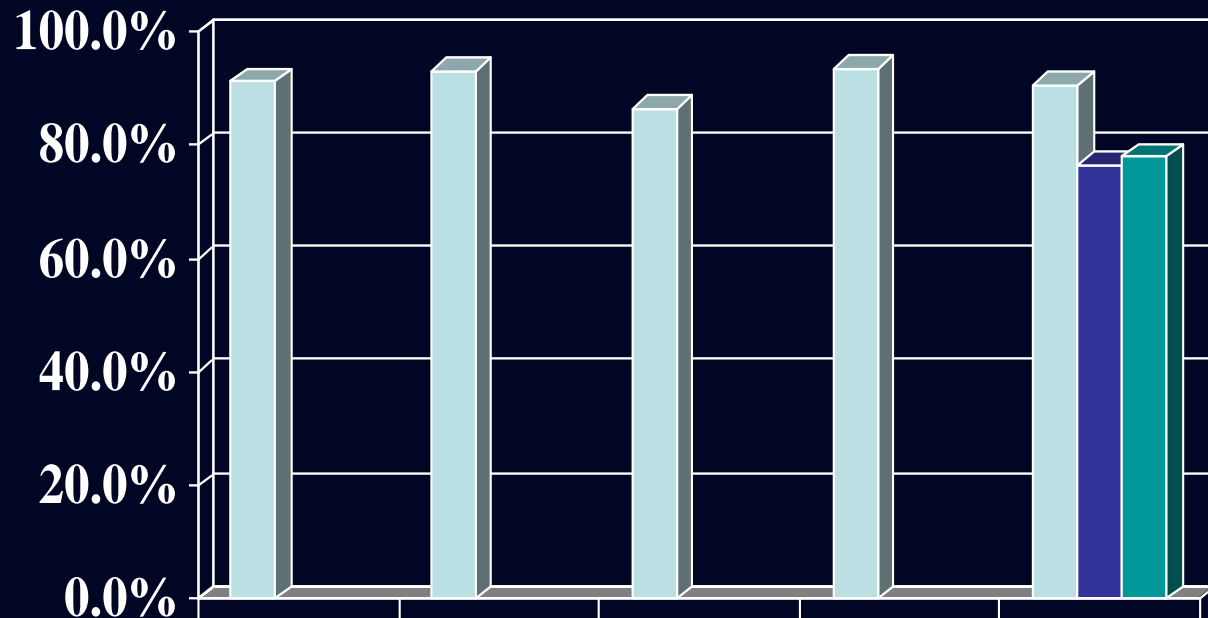
	2007Q2	2007Q3	2007Q4	2008Q1	R4Q
■ Parkview	98.9%	100.0%	99.4%	98.8%	99.3%
■ Like Hospitals					96.3%
■ All Hospitals					96.7%

**Beta Blocker on discharge  
Among Patients with STEMI  
All PCI Patients  
(line 1585)**



	2007Q2	2007Q3	2007Q4	2008Q1	R4Q
■ Parkview	100.0%	100.0%	100.0%	100.0%	100.0%
■ Like Hospitals					94.3%
■ All Hospital					94.3%

**ACE Inhibitor/ARB on discharge  
Among Patients with EF  $\leq$ 40%  
All PCI Patients  
(line 1583)**



	2007Q2	2007Q3	2007Q4	2008Q1	R4Q
■ Parkview	91.2%	93.1%	86.4%	93.5%	90.6%
■ Like Hospitals					76.5%
■ All Hospitals					78.0%

# Conclusion:

- Find your data collectors
- [www.ncdr.com](http://www.ncdr.com)
- Set up a NCDR account
- Review the data elements and definitions
- Ask for outcomes

